



# CD107a Polyclonal Antibody

<b>Catalog No</b>	YP-Ab-13997
<b>Isotype</b>	IgG
<b>Reactivity</b>	Human;Rat;Mouse;
<b>Applications</b>	WB;ELISA
<b>Gene Name</b>	LAMP1
<b>Protein Name</b>	Lysosome-associated membrane glycoprotein 1
<b>Immunogen</b>	The antiserum was produced against synthesized peptide derived from the Internal region of human LAMP1. AA range:211-260
<b>Specificity</b>	CD107a Polyclonal Antibody detects endogenous levels of CD107a protein.
<b>Formulation</b>	Liquid in PBS containing 50% glycerol, 0.5% BSA and 0.02% sodium azide.
<b>Source</b>	Polyclonal, Rabbit,IgG
<b>Purification</b>	The antibody was affinity-purified from rabbit antiserum by affinity-chromatography using epitope-specific immunogen.
<b>Dilution</b>	Western Blot: 1/500 - 1/2000. ELISA: 1/20000. Not yet tested in other applications.
<b>Concentration</b>	1 mg/ml
<b>Purity</b>	≥90%
<b>Storage Stability</b>	-20°C/1 year
<b>Synonyms</b>	LAMP1; Lysosome-associated membrane glycoprotein 1; LAMP-1; Lysosome-associated membrane protein 1; CD107 antigen-like family member A; CD107a
<b>Observed Band</b>	120kD
<b>Cell Pathway</b>	Cell membrane ; Single-pass type I membrane protein . Endosome membrane; Single-pass type I membrane protein . Lysosome membrane ; Single-pass type I membrane protein . Late endosome membrane ; Single-pass type I membrane protein . Cytolytic granule membrane ; Single-pass type I membrane protein . This protein shuttles between lysosomes, endosomes, and the plasma membrane (By similarity). Colocalizes with OSBPL1A at the late endosome (PubMed:16176980).
<b>Tissue Specificity</b>	Brain,Liver,Pancreas,Placenta,Plasma,Testis,
<b>Function</b>	function:Presents carbohydrate ligands to selectins. Also implicated in tumor cell metastasis.,PTM:O- and N-glycosylated; some of the 18 N-linked glycans are polylactosaminoglycans.,similarity:Belongs to the LAMP family.,subcellular location:This protein shuttles between lysosomes, endosomes, and the plasma membrane.,



## Background

The protein encoded by this gene is a member of a family of membrane glycoproteins. This glycoprotein provides selectins with carbohydrate ligands. It may also play a role in tumor cell metastasis. [provided by RefSeq, Jul 2008],

## matters needing attention

Avoid repeated freezing and thawing!

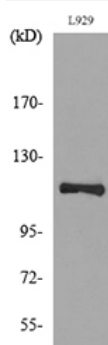
## Usage suggestions

This product can be used in immunological reaction related experiments. For more information, please consult technical personnel.

## Products Images



Western Blot analysis of L929 cells using CD107a Polyclonal Antibody. Secondary antibody(catalog#:RS0002) was diluted at 1:20000



Western blot analysis of lysate from L929 cells, using LAMP1 Antibody.